

LUXURY POWER CATAMARAN

70



LUXURY POWER CATAMARAN

A large, stylized number '70' is centered on the page. The '7' is composed of several geometric shapes: a horizontal bar at the top, a vertical bar on the left, and a diagonal bar at the bottom. The '0' is a simple circle with a horizontal bar across its middle. The text 'LUXURY POWER CATAMARAN' is written in a clean, sans-serif font, with the words 'LUXURY', 'POWER', and 'CATAMARAN' positioned to the left, middle, and right of the '70' respectively, appearing to be overlaid on or integrated with the number.



LIVE. LARGE.

Unlike Anything You've Ever Stepped Aboard Before.









RAISING THE BAR FOR **LUXURY POWER CATAMARANS**

Gorgeous lines, super balanced, intelligent luxury. These are just a few ways to describe our new flagship, the Aquila 70 Luxury Power Catamaran. This breathtaking and powerful catamaran is like nothing you have ever stepped aboard. With an aesthetically pleasing design at every angle, the Aquila 70 looks like the stunning luxury yacht that it is.







LUXURY POWER CATAMARAN



Portuguese Walkaround Flybridge with Bridge-to-Bow Stairs to Foredeck Lounge.











Enclosed SkyLounge with Outdoor Entertainment Area.



Custom Al Fresco Dining Table with Seating for up to Eight.





Innovative Loading Platform for Aquila 14' RIB Tender.



MASSIVE SPACES

For your relaxation and entertainment needs, the Aquila 70 Luxury has massive spaces designed with European flair that are bright, inviting, and welcoming including a 27' wide master suite. Versatile interior layouts, along with rich wood finishes, soft fabrics, smart appliances, designer furnishings, incredible headroom, and panoramic windows make your experience onboard even better.







Maindeck Dining Area with Natuzzi Italia Furnishings.







Luxurious and Contemporary Styling, Materials, and Finishes Featuring Panoramic Views.



Galley and Wet Bar Area Featuring Smart Full-Size Gaggenau and Fisher & Paykel Appliances.





Entertaining in Open-Air or Climate-Controlled SkyLounge.







LUXURIOUS LIVING & COMFORT

The Aquila 70 Luxury Power Catamaran offers a comfortable layout including one full-beam master suite, two VIP staterooms, one cabin for captain/crew or guests.





Portside Master Head with Double Vanity and Rain Shower.



Full-Beam Master Suite with King Size Bed and Chaise Lounger.





Full-Size Closet and Generous Storage.



Wireless Charging Throughout.



Starboardside VIP Cabin.



Portside VIP Cabin.









Desk Area with Master Control Panel and C-Zone Digital Switching System.



Portside Captain/Crew or Guest Cabin.



Laundry and Pantry Area with Full-Size Miele Ventless Washer/Dryer.





Starboardside Day Head
with Interior Engine Room Access.



2X D13 1000 HP Volvo Penta Diesel Engines.



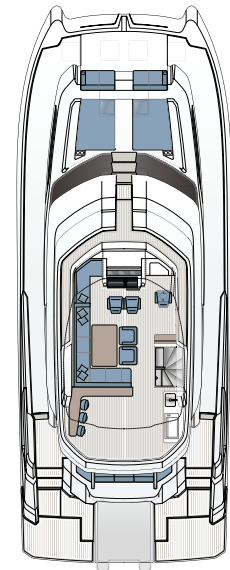


Engine Room Access Via Deck Hatch or Interior Water-Tight Door.

SPECIFICATIONS

The Aquila 70 Luxury can top out at 27 knots while cruising comfortably at 22 knots. Power and maneuverability come from Volvo Penta inboards coupled with joystick control. Carbon fiber bulkeads keep weight down while adding to the yacht's strength. The high bridge-deck clearance allows for even more comfort underway and improved speeds.

Length overall (LOA)	21.26 M / 69' 9"
Waterline length (LWL)	20.55 M / 67' 5"
Beam overall	8.2 M / 26' 11"
Height above waterline w/ hard top (including light and radar mast)	7.8 M / 25' 7"
Draft including propellor (approximate - will vary depending on load)	1.45 M / 4' 9"
Bridge deck clearance (approximate - will vary depending on load)	0.69 M / 2' 3"
Dry weight	43,000 KG / 94,800 LB
Light displacement	47,000 KG / 103,617 LB
Fully loaded displacement	54,577 KG / 120,321 LB



**STANDARD
FLYBRIDGE**

Tankage

Fuel tank capacity (main tanks)	4,400 L / 1,162 GAL
Fuel tank capacity (day tanks)	780 L / 206 GAL
Water tank (standard)	1,560 L / 412 GAL
Holding tank (total)	560 L / 146 GAL

CE certification <i>(internationally recognized)</i>	A (ocean):12 PAX
	B (offshore):18 PAX
	C (coastal):24 PAX
	D (Inland):40 PAX



**STANDARD
MAIN DECK**

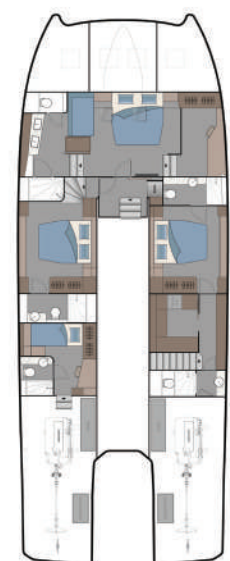
Accommodation

Cabins	4/5/6
Heads with separate showers	4/5/6
Sleeps up to	12

*Optional forepeak cabin

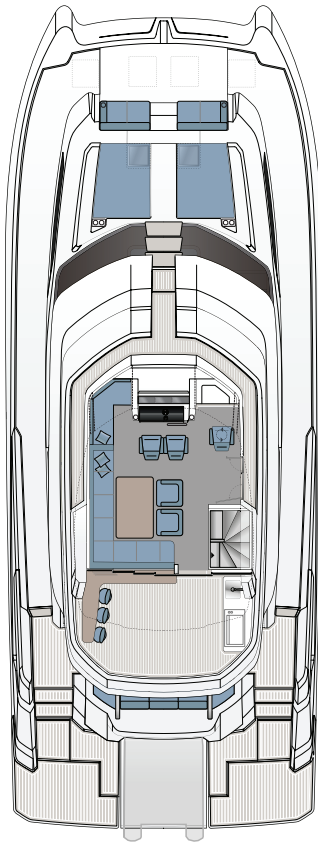
Propulsion

Engines	Standard	2X D13 1000 HP Volvo Penta Diesel Engines
	Optional	Emotion Hybrid Power and Navigation Package
Gearbox		ZF500A / Ratio 1.964:1
Propellers		Bronze-5 Blade 30" (760mm) with rope cutters
Steering System		Electric Fly By Wire Steering System
Prop Shaft System		Stainless steel with AquaDrive CV48 Antivibration thrust bearing system
Prop Shaft Custom Fairing		Custom designed to reduce drag and improve efficiency
Vessel Control System		Electronic
Exhaust		Under water
Thrust Bearing and AquaDrive CV Joint		Reduces vibration, noise, and improves performance
Rudder		Custom designed foil shape - Bronze
Protection of Running Gear and Prop		Optional PropSpeed applied to all running gear and props

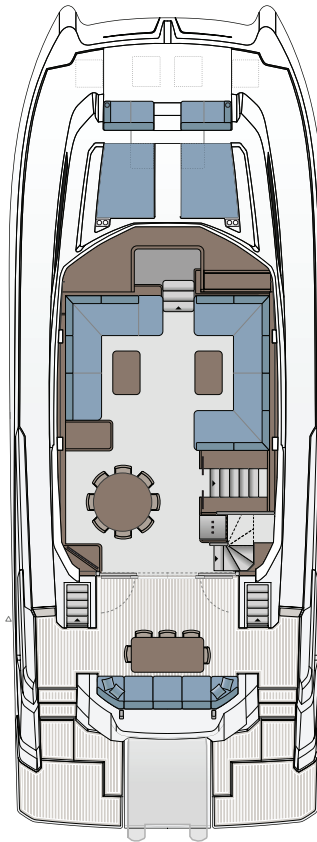


**STANDARD 4-CABIN
GALLEY UP**

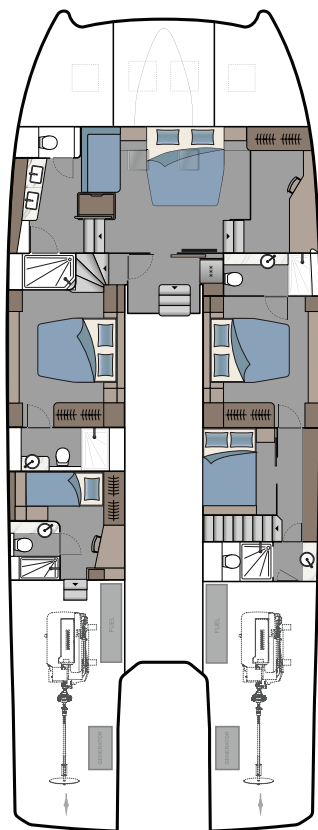
OPTIONAL LAYOUTS



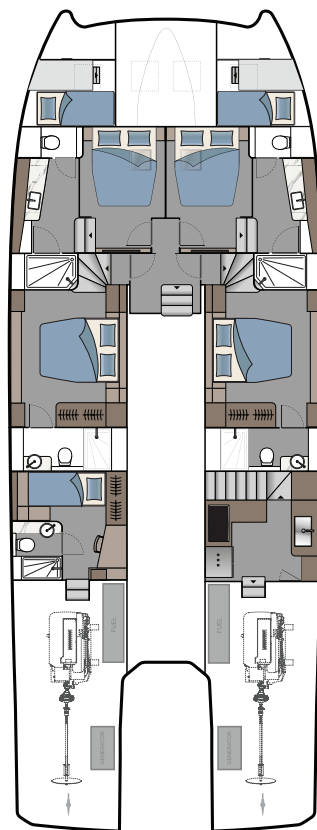
SKYLOUNGE FLYBRIDGE



MAIN DECK/GALLEY DOWN



5-CABIN/GALLEY UP



5-CABIN/GALLEY DOWN





Copyright © 2023 Aquila Boats. All rights reserved.